

Uniform

From September 2016

- Formal white shirt with collar (to be worn tucked inside trousers/skirt).
- Black v-neck jumper with new school logo*.
- Plain black full length school trousers – tailored/straight/slim/skinny but no tight lycra.
- A black school skirt is optional for girls – no shorter than just above the knee.
- Pudsey Grange School clip on tie to be worn every day by all Year 7-11 students.
- Black single colour flat leather/leather type shoes. No canvas or trainers.

*Compulsory for Year 7

Year 8, 9, 10 & 11 students are permitted to wear the old style PGS jumper for 2016/17.

***The student's name should be clearly printed in their school uniform.**



Single colour black leather/leather type shoes with flat sole (heel no higher than 3cm).



Note the lace up shoes on the second row – leather uppers, no canvas.



No trainers, colour additions, buckles, studs, glitter, open toe, sandals, boots, UGG boots, canvas style pumps.





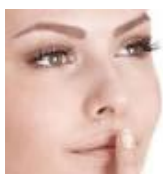
Plain black full length school trousers – tailored/straight/slim/skinny fit.



No tight lycra or trousers with non-black zips or buttons on the outside. No black jeans, tracksuit bottoms or leggings.



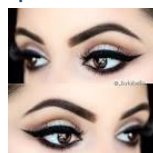
Make-up is discouraged. Natural make-up will be accepted.



Nail varnish should be clear or a natural colour.



No false eyelashes, heavy or extended eyeliner, contouring, heavy eye shadow, lipstick.



False/ acrylic nails, dark coloured nail varnish or decorated nails are not allowed.

PE Kit

- Suitable trainers.
- Football boots.
- White polo shirt with collar (new logo).
- Black and red school sports shirt (new logo).
- Black and red hoodie (new logo) - optional
- Black shorts (new logo).
- Girls are not permitted to wear leggings.
- Long black socks.
- Optional black tracksuit.
- A clearly labelled towel.

Year 8, 9, 10 & 11 students are permitted to wear the old style PGS polo shirt, sports shirt and shorts for 2016/17.

***The student's name should be clearly printed in their uniform.**



Jewellery

For health and safety students are asked not to wear jewellery, apart from watches and earrings (studs only). Facial piercings are not permitted.



Coats

Students are asked to wear a sensible coat appropriate to the weather conditions (waterproof, warm etc).

Hats/caps

Hats and caps should not be worn on the school site.

Shoes – medical exceptions

For medical emergencies only where advice is given against wearing school shoes, black trainers may be worn for the period of time indicated by the doctor. The relevant Year Leader will need to see a note from a medical practitioner on the day or in advance.

**Basic equipment**

All students should ensure that they have the following basic equipment:

- Student planner (provided by the school). Students should bring their planner to school with them every day
- Pen
- Red pen for 'reflection work'
- Set of coloured pencils
- Pencil
- Rubber
- 15cm ruler
- Pencil sharpener
- Protractor
- A pair of compass
- Scientific calculator
- A suitable bag to carry equipment, books and PE kit. The bag should be big enough to hold an A4 file (e.g. a rucksack).