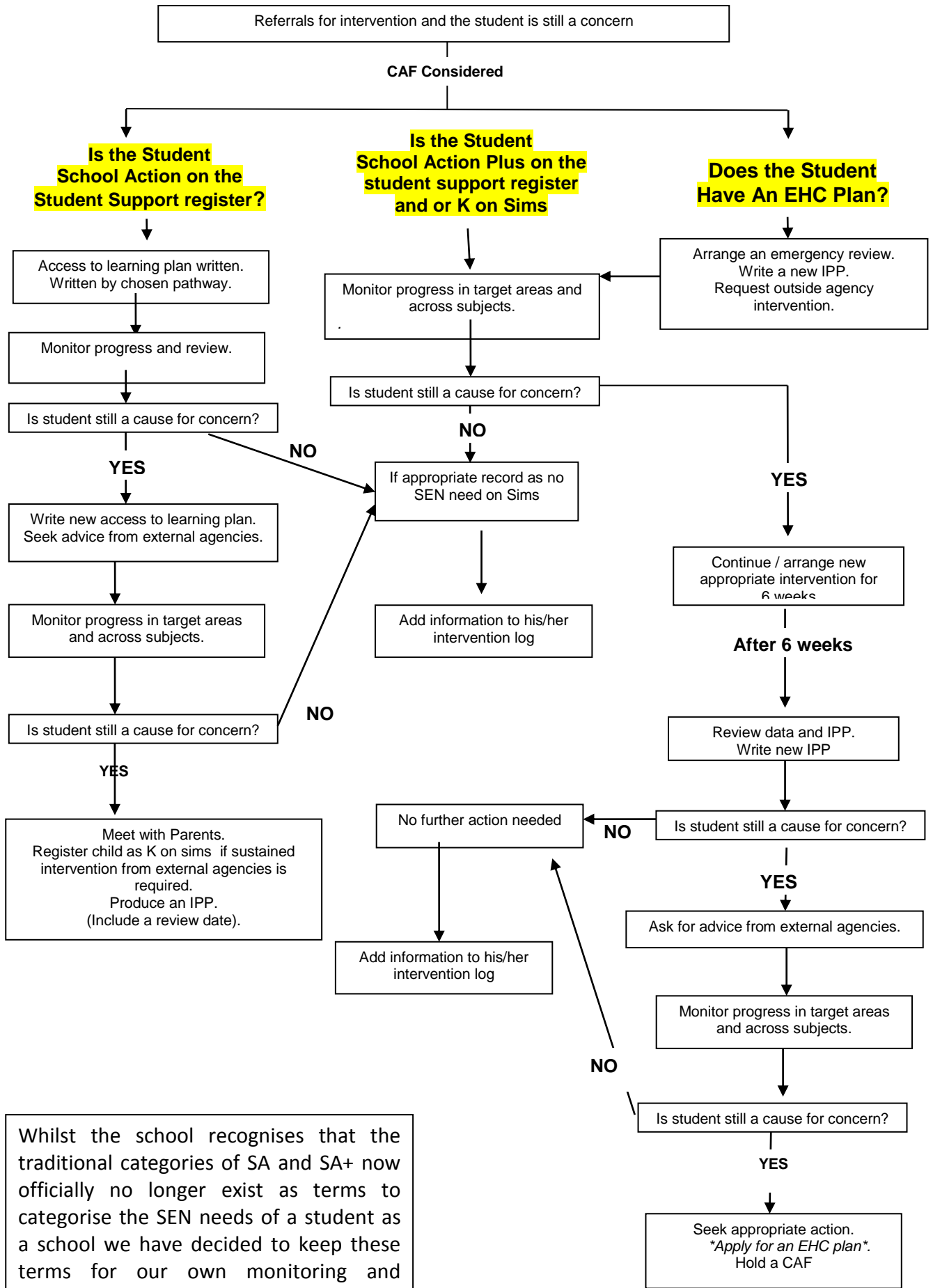


Identification of students for SEN support and monitoring of progress after several interventions have been attempted



Whilst the school recognises that the traditional categories of SA and SA+ now officially no longer exist as terms to categorise the SEN needs of a student as a school we have decided to keep these terms for our own monitoring and evaluation purposes.

Not applicable due to already being in place if student already has an EHC plan